

GUSTIN



138H03157
Welcome T Gustin-ET *TV
Reg USA 125535845
Born 11/16/1998
DMS: 135
aAa: 1-3-2
SCE: 8 DCE: 8

- ◆ Dairyness
- ◆ Good Feet & Legs
- ◆ Calving Ease
- ◆ From "G" Family at Welcome

138H03157 **GUSTIN** A Tesk Terry son out of the G-Family at Welcome Farms in New York. His DAM is Welcome Hunter Giblet-ET EX 90 GMD 4-08 365da, 39,730 milk 3.4% 1368F 3.3% 1307 P. Next dam is Welcome Elton Gourmet-ET VG 87 GMD DOM, 5-06 365 da, 44,600 milk 3.5% 1539F 2.8% 1265 P. GUSTIN is 8 on calving ease and a good improver of feet, legs and dairyness.

Gustin Dam



Welcome Hunter Giblet-ET
(EX-90 GMD)

GUSTO



91H004408
Mar-Bil Rudolph Gusto-ET
*TV *TL
Reg USA 126310001
Born 07/10/1999
DMS: N/A
aAa: 1-6-5
SCE: 8 DCE:7

- ◆ Rudolph x Cleitus Grace
VG-88 EX MAM GMD
- ◆ Deep Cow Family
- ◆ Great Components
- ◆ TPI +1682

Gusto Daughter



Champion Farms Gusto Grace
(VG-85 VG-MS)



El Toro Genetics

Bill & Zoila Hillier
41925 Yorba Avenue,
Temecula, CA 92592

Office Ph: (951) 333-1260 • Fax: (951) 699-8701
Bill's Cell: (951) 218-7446
www.eltorgenetics.com

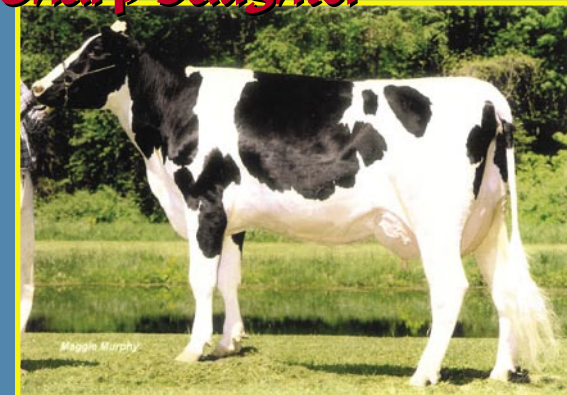
SHARP



036H00235
Controlled by
Field of Dreams Genetics
Junge Winchester Sharp-ET
Reg USA 121008019
Born 7/21/1998
DMS:
aAa: 4-6-2-5
SCE: 7 DCE: 8

- ◆ Winchester x Tesk Scarlet
VG-88 EX MAM GMD
- ◆ Milk & Fat
- ◆ Calving Ease
- ◆ Powerful Cow Family

Sharp Daughter



Woodcreek Sharp Burdock
VG-88
VG 2 yr. old mammary

